

Maxime Willems

[www.proef.club](http://www.proef.club)

[info@proef.club](mailto:info@proef.club)



co creative foodlab  
&  
food incubator

# Vision

*Science x Food*

*Fast Prototyping & MVP*

*Ecosystem*

# Mission

*One-stop shop towards innovation*

*Better Food*

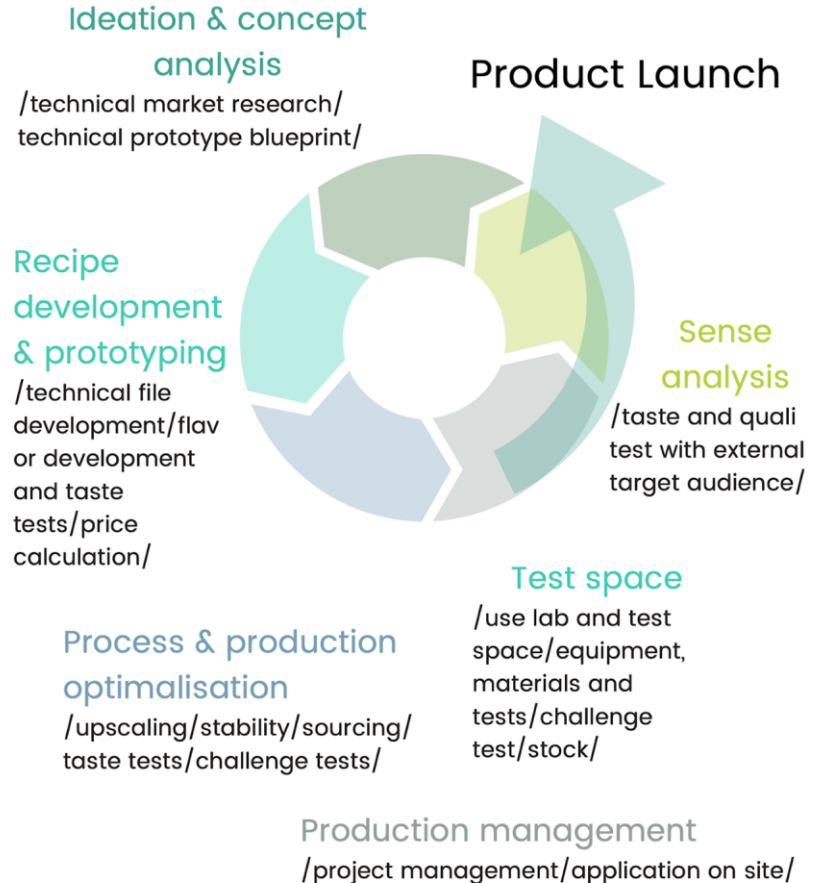
*Lean route to market*

*Proof family community & data*

# Our Team



## Product Innovation & Renovation



# Start-ups

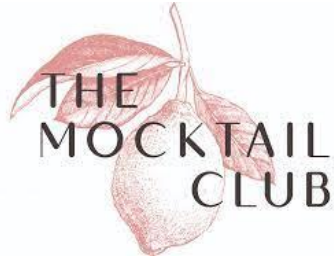


MONSIEUR  
*M*  
BOUDIN

SPARKLING • NATURAL  
TEA  
ORGANIC

**FERM.**  
KOMBUCHA

*Midi*  
APÉRITIFS



*Davaï*  
delicious  
dumplings



*Ritchie*



PŌW

buddy

**RASCAL**  
tastebuddies

# Grown-ups



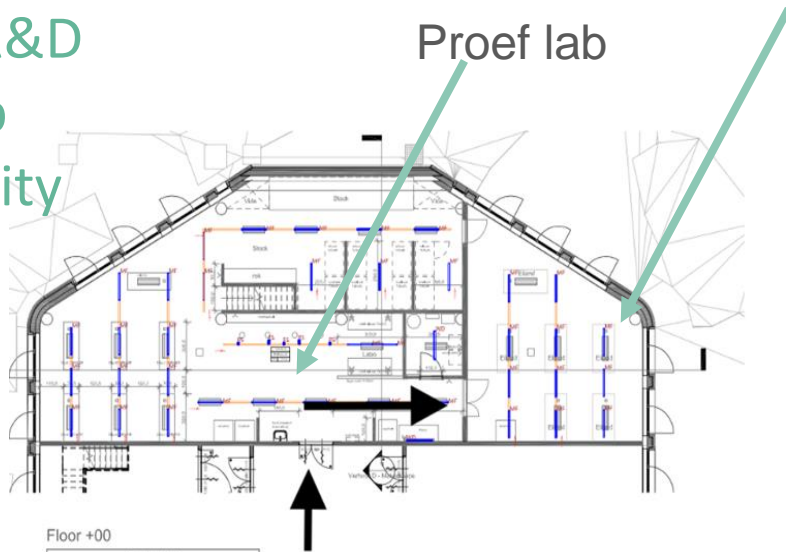
# Foodlab & Incubator

External R&D  
Testlab

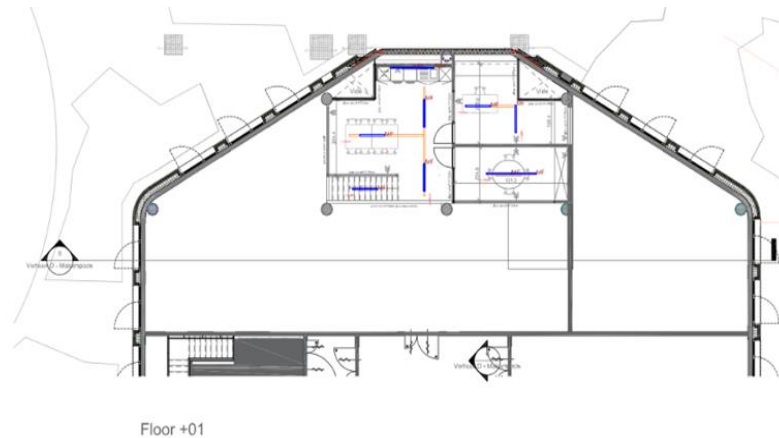


# Foodlab & Incubator

External R&D  
Testlab  
Community



Proef family lab





# Food Incubator



# Food Tech



**BOLDER FOODS**

**aplascal**<sup>®</sup>  
plant proteins

# OUR ECO-SYSTEM

Within the lab we connect 4 groups that cross-pollinate each other and fuel the lab with ideas, ingredients, new flavors, technology, techniques & trends.

The connection of these groups provides us with a unique holistic approach on food innovation.



**Chefs & Bartenders**  
/flavor/taste/creativity/



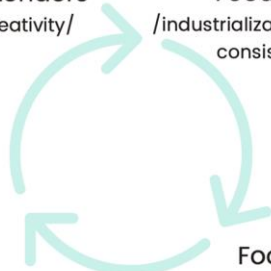
**Food companies**  
/industrialization/upscaling/  
consistency/stability/  
ingredients/



**Scientists**  
/technology/knowledge/  
innovation/expertise/



**Food Start ups**  
/inspiration/trends/novel  
concepts/consumer  
insight



**START IT**  
@KBC



# Why us?

*Multidisciplinary team*

*One stop shop (ideation-> production)*

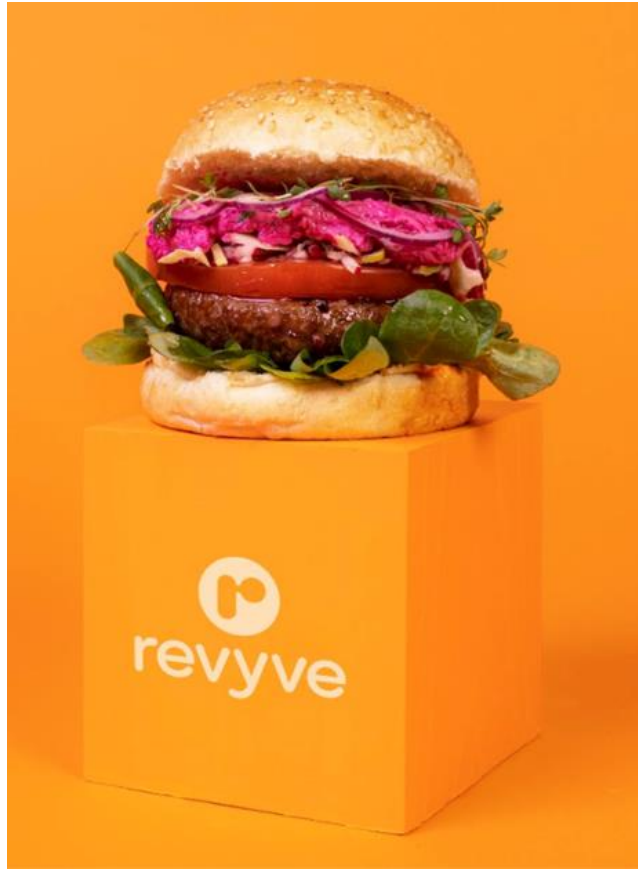
*Fast Prototyping & MVP*

*Agility from start-ups + Creativity from chefs + Science from R&D*

*Ecosystem*

# Our Innovations

*Our uniqueness lies in our holistic view on food, across multiple product categories while having specialisations in waste valorization, NA drinks, plant based & fermentation*



*Plant based meat analogues*



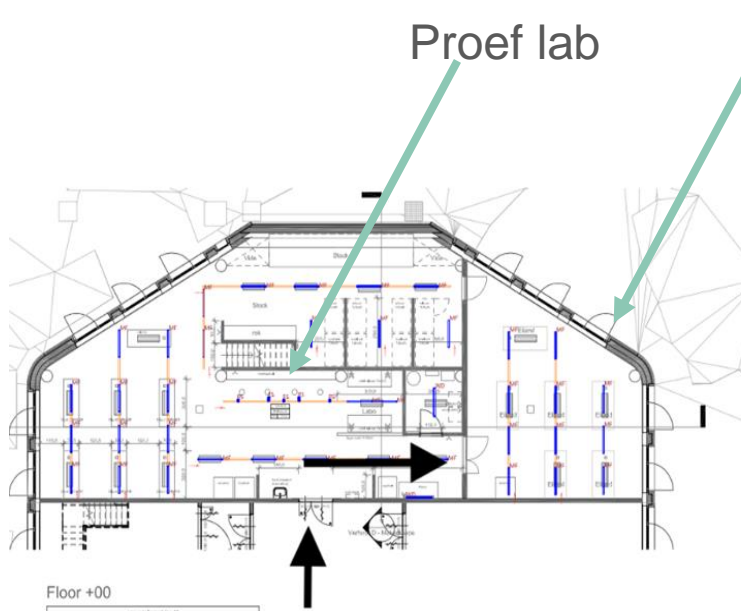
*Functional drinks*



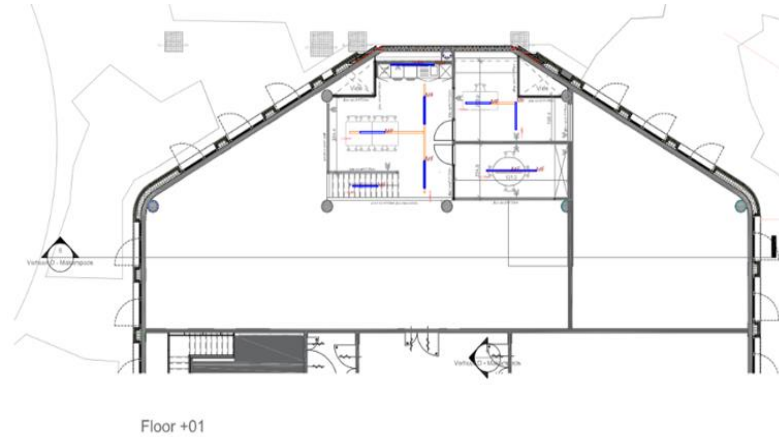
*Plant based milk & cheezes*



# Vacancy



## Proef family lab



Maxime Willems

[www.proef.club](http://www.proef.club)

[info@proef.club](mailto:info@proef.club)



co creative foodlab  
&  
food incubator